

All Rights Reserved

Materials and specifications are subject to change without notice.
Featured machines in photos may include additional equipment.
See your XCMG dealer for available options.



All Terrain Crane XCA60_EV



Preliminary



XCMG European Sales and Services GmbH
Address: Europark Fichtenhain B 4,47807 Krefeld,
Deutschland
Tel: +49 (0) 2151 8206 890
Fax: +49 (0) 2151 8206 899
E-Mail: info@xcmg-ess.de

XUZHOU CONSTRUCTION MACHINERY GROUP IMP. & EXP. CO., LTD
Address: No.1, Tuolanshan Road, Xuzhou Economic Developing Zone, Jiangsu,
China 221004
Tel: + 86(0) 516 8773 9703
Fax: + 86(0) 516 8773 9230
E-Mail: europe@xcmg.com

www.xcmg.com/en-ap





INTRODUCTION OF XCMG

XCMG, as a leading enterprise valued of 100 billion RMB, with the largest scale, the best technology level, the largest export volume, and high competitiveness and influence in China's construction machinery industry, has been occupying the first place in China's construction machinery industry for decades, and it now ranks the third in the world industry and the 395th among the world's top 500 brands.

The main products by XCMG consists of 16 categories of equipment such as hoisting machinery, excavation machinery, concrete machinery, mining machinery, earth-moving machinery and road machinery, etc., as well as three categories of key components such as hydraulic system, transmission system and electric control system. Among above-mentioned, hoisting machinery ranks first in the world, and package solution of road construction and maintenance machinery, piling machinery and concrete machinery are among the first-class bloc in the world.

XCMG has accumulated more than 8000 approved patents, including more than 1900 invention patents and more than 130 PCT international patents. Entities of R&D centers, manufacturing plants or KD factories are in operation in more than 10 countries such as Germany, the United States, Brazil and India, XCMG has also acquired three European enterprises including Schwing in Germany. The Brazil manufacturing plant, with an investment of 350 million dollars to build up factories on a bare ground, has become a model of economic cooperation between China and Brazil. At present, XCMG products are exported to 187 countries and regions, covering 97% of the countries along "The Belt and Road" area. In export business to 35 countries, XCMG's proportion ranks NO. 1, with a steady first place within Chinese industry in terms of annual export volume and overseas income.

XCMG IN EUROPE

Since 1990s when XCMG was already a known brand within the industry in Europe, XCMG has been one of the major international manufacturers supplying products and service across the Continent. With its rapid development in recent years, XCMG is gradually building up an all-round network including: R&D department; local distribution, supply chain management and an integrated customer services and training center.

At present, XCMG has 3 subsidiaries in operation, with more than 100 multinational employees in Europe:

- ERC XCMG European research center GmbH
- EPC XCMG European purchasing center GmbH
- ESS XCMG European sales and services GmbH

XCMG is also holding a resource of more than 100 branches by local dealers throughout the Europe, generating a whole value chain that is serving the entire European market, including sales, service, financing, used equipment recycle, etc.

We actively and continuously implement our globalization strategy. Our first-class international team has many years of professional experience and excellent cross-cultural management capability.

With a strong combination of expertise and practical experience in a multicultural context, we create real value and provide a high level of return on investment to our European customers.



XCA60_EV

All Terrain Crane

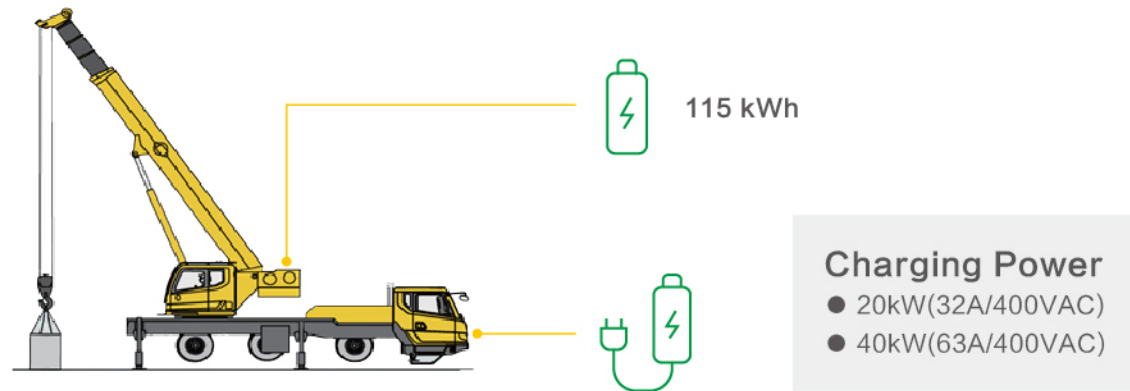


PRODUCT OVERVIEW

- 01** Pure electric operations with zero emission.
- 02** Two engines for traveling, powerful and efficient.
- 03** Heavy-duty single-transverse arm independent suspension system.
- 04** Good maneuverability.
- 05** High degree of intelligence.
- 06** Multiple charging modes for convenient operation.
- 07** Human-machine interaction system with new appearance.

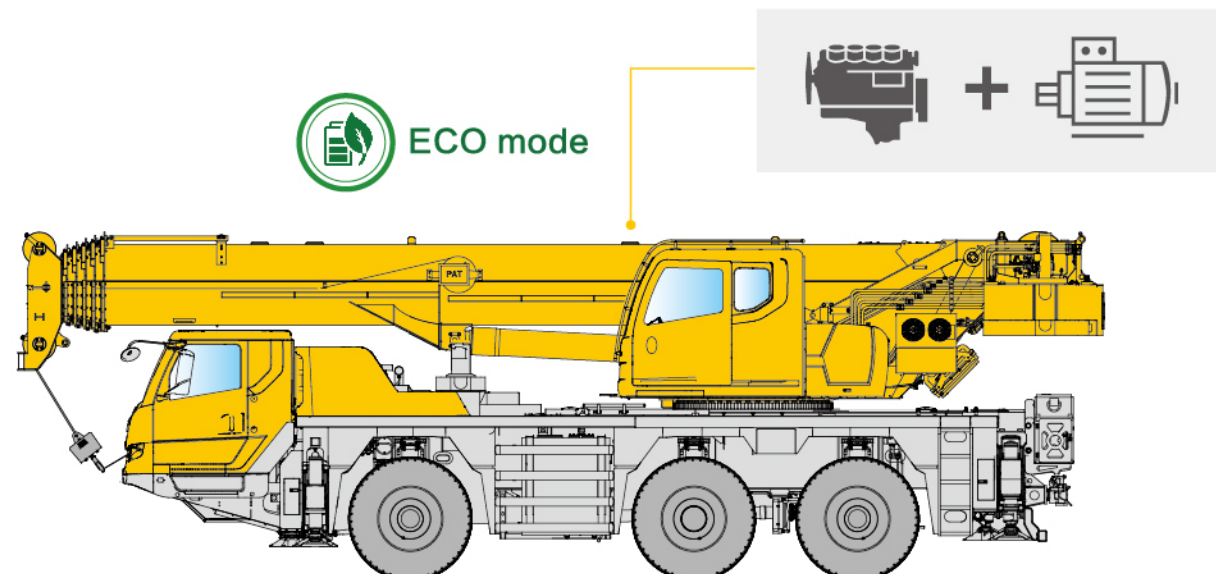
► Pure electric operations with zero emission

- ◆ The 400V AC realizes plug-and-play and the 170kW motor + high-power charger combination covers all working conditions and reassures pure electric operations.
- ◆ The high capacity battery is installed to realize the battery electric operations, solve the trouble of no power supply in working site, and meet the pure electric operating needs of the users in diversified working sites to the maximum degree.



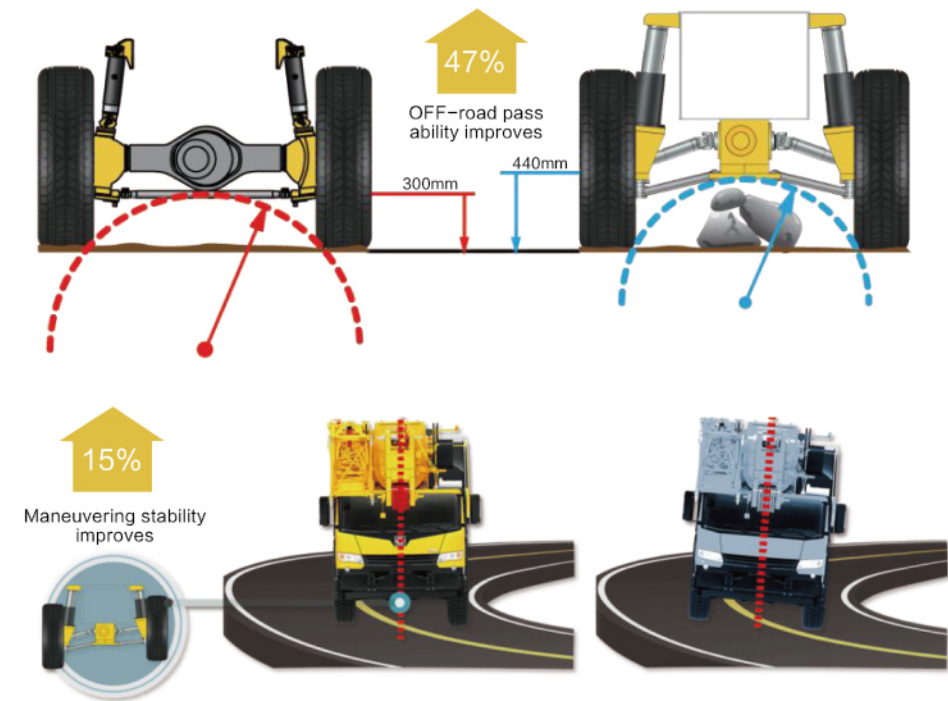
► Dual-power for traveling, powerful and efficient

- ◆ The dual-power drive (fuel engine and electric motor) is applied for the job-site transfer. Under different traveling conditions, the motor intervenes at appropriate time to drive this product and the torque is intelligently distributed to maintain the engine running within the optimal economic fuel consumption range. The braking and coasting energy is recovered to neglect neither charging nor discharging and lower the fuel consumption by more than 40%.
- ◆ The dual-power (fuel engine and electric motor) features strong power and provides up to 400kw power, which improved by 42% compared with the products of same level.



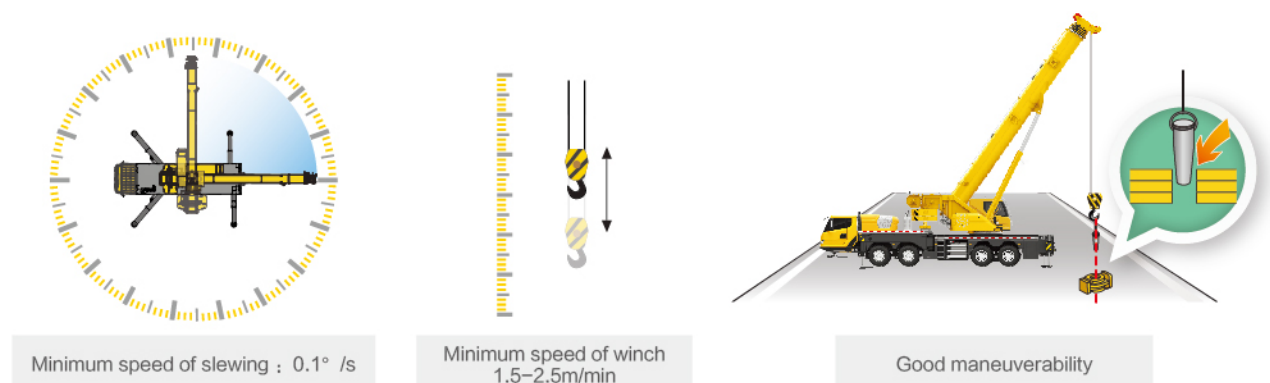
► Heavy-duty single-transverse arm independent suspension system

- ◆ The independent bounding left and right wheels are self-adaptive to road conditions to effectively improve the maneuvering stability during high-speed steering and realize excellent off-road performance on narrow and rugged roads.



► Good maneuverability

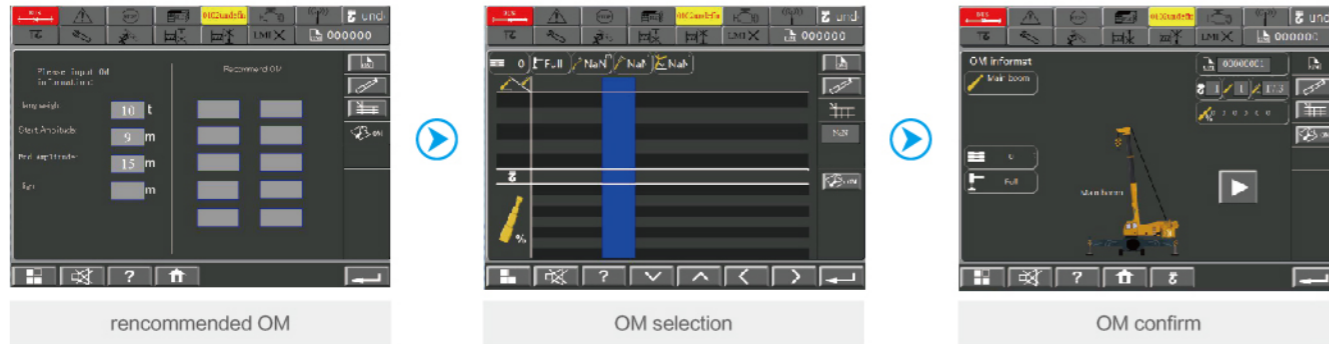
- ◆ Plunger pump load-sensing control system, more than 15% of fuel can be saved, effectively lowering oil temperature with high safety.
- ◆ Dual-pump separate and confluence control technology improves the working efficiency by more than 10%, less working time and lower cost.
- ◆ Precise flow control; winch adopts high-performance motor, and the minimum stable lifting speed is 2.5m/min.
- ◆ The low-speed high torque slewing system is adopted, and the minimum stable slewing speed is 0.1° /s.



► High degree of intelligence

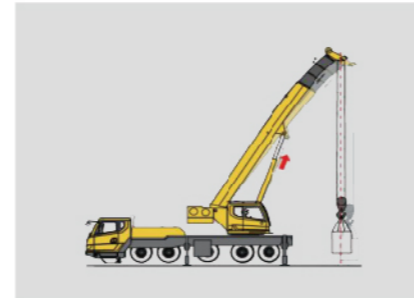
★ Automatic configuration planning technology

- ◆ Automatically recommend the most proper working conditions.
- ◆ Searching and setting work condition simply.



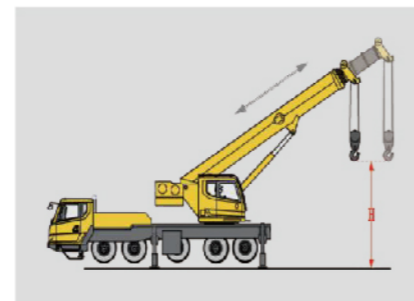
★ Automatic luffing compensation technology

- ◆ With elevation compensation technology applied, it automatically realizes the compensation of the amplitude change caused by the deformation of the boom when lifting and lowering the hook.



★ Winch servo control technology

- ◆ With winch servo control technology applied, winch is automatically managed by control system during telescoping and luffing operation, which saves operation time over 40%.
- ◆ There are 3 modes: winch rope servo action mode while luffing the boom, the hook height above the ground is not changed; winch rope servo action mode while telescoping the boom, the hook height above the ground is not changed; winch rope servo action mode while telescoping the boom, the clearance between the hook and boom head is not changed.



- ◆ Convenient wireless remote control is adopted to integrate various functions into one, so the crane can be operated by only one person with lower cost.



► Multiple charging modes for convenient operation

- ◆ The multiple charging modes, including AC and DC charging modes, are provided. The AC charging power is up to 40kW and the adaptable charging power is available in >95% working sites. The attached 50m charging cable is plug-and-play, featuring high convenience and rapidity.
- ◆ The DC fast charging guarantees high charging efficiency. With operations at daytime and charging at nighttime, this product saves every second for you.



DC charging port



AC charging port

► Human-machine interaction system with new appearance

- ◆ Industry pioneering man-machine interaction system resembling that of a sedan enables friendly interaction between the operator and the crane. Information about driving and lifting operations are easily accessible, leading to easier and more convenient operations.
- ◆ New generation appearance design presents power and vigor. Fashionable new cabs show a perfect combination of streamlining and strength. With ergonomic analysis and user-friendly details integrated, a quality product is created. It is convenient to maintain, easy to drive and comfortable to operate. With ergonomic analysis and user-friendly details integrated, a quality product is created. It is convenient to maintain, easy to drive and comfortable to operate.



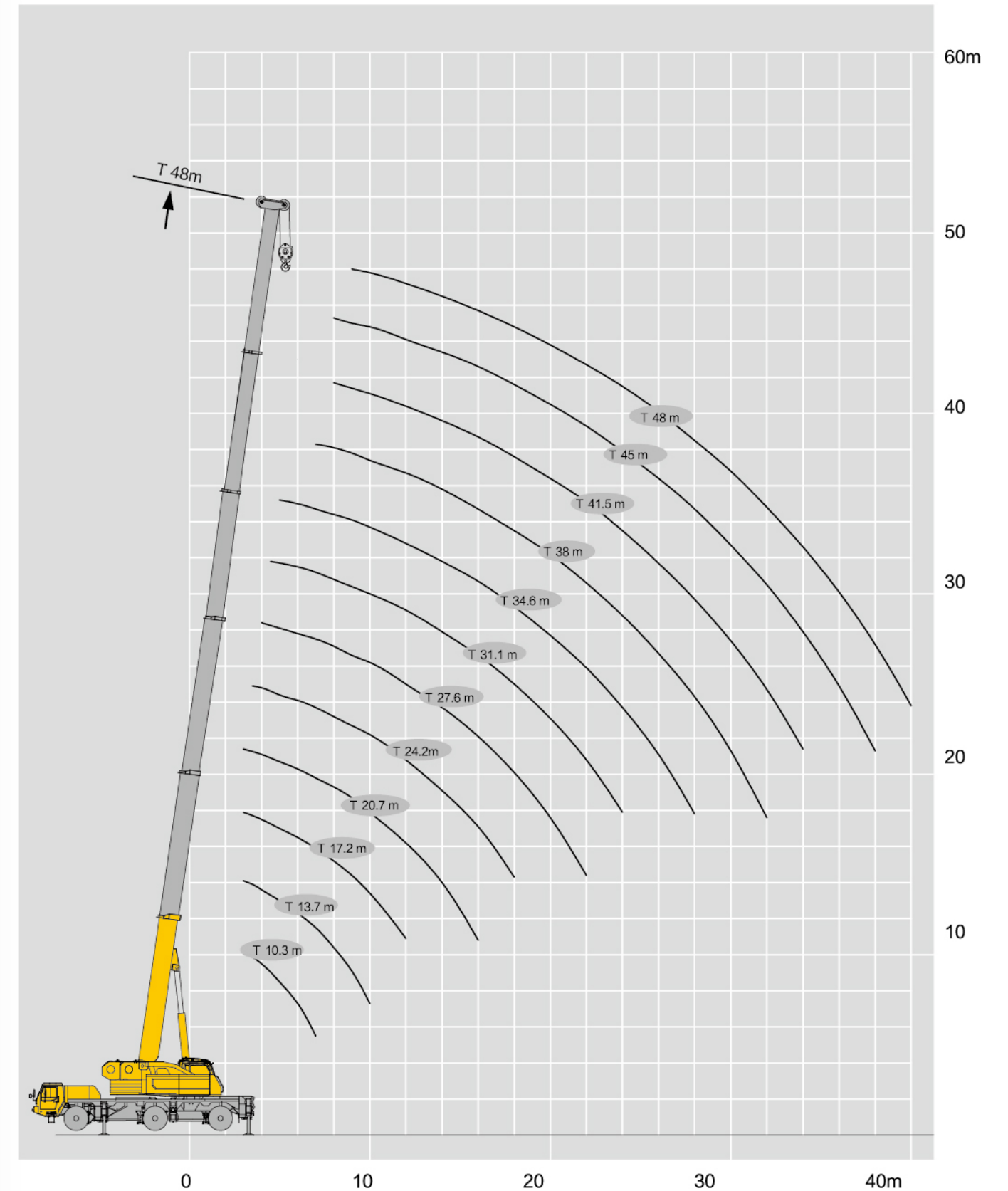
Driver's cab

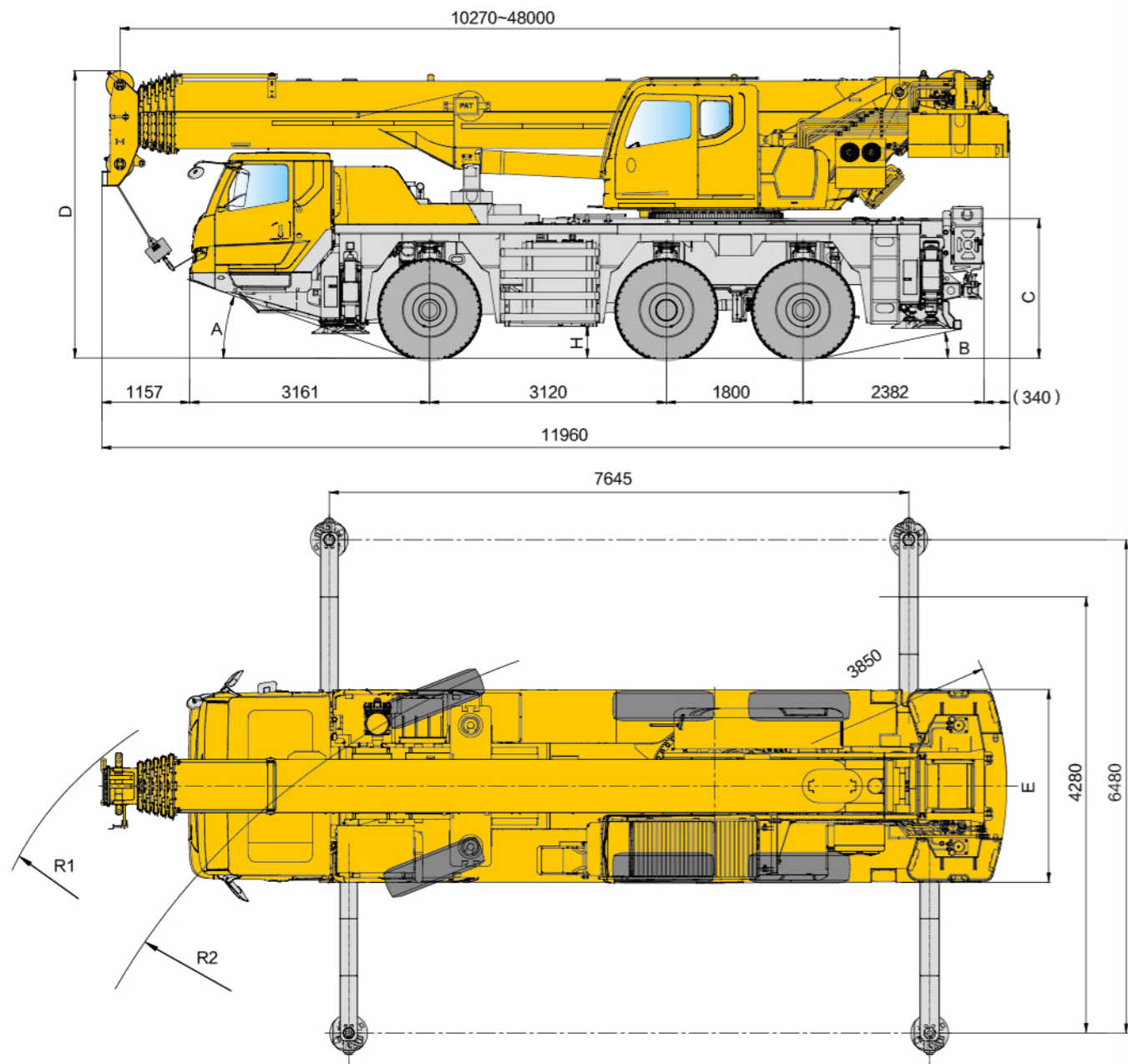
- ◆ 12.3" large-mirror true-color display screen achieves clearer display performance and 7" entertainment display screen provides better experience.
- ◆ The driver and passenger seats adopt air-cushioned seat.
- ◆ Standard heating and A/C system.



Operator's cab

- ◆ 10.4" true-color touchscreen.
- ◆ 20° tiltable operator's cab .
- ◆ The pull-push steps are installed to ease the access of the personnel.
- ◆ Standard heating and A/C system .





	A (°)	B (°)	C (mm)	D (mm)	E (mm)	H (mm)	R1 (mm)	R2 (mm)
385/95 R 25 (14.00 R 25)	19	12	1810	3790	2550	391	9150	7000
445/95R25 (16.00R25)	20	13	1860	3840	2550	441	9950	8250
525/80R25 (20.5R25)	20	13	1860	3840	2715	441	10770	9380

■ Dimensions

Dimensions (length × width × height)	11960*2550*3790mm
Wheel base	3120+1800mm
Track (Front/ Rear)	2150mm
Front/ Rear overhang	3161/2382mm
Front/ Rear extension	1157/340mm

■ Weight

Max. permissible total weight/Axle load	36000kg
Axle load-1st axle	12000kg
Axle load-2nd axle	12000kg
Axle load-3rd axle	12000kg

■ Power

Engine model	OM936LA(EU StageV)
Engine rated power/rpm	230kw/2200rpm
Max. net power/rpm	230kw/2200rpm
Engine rated torque/rpm	1300Nm/1200rpm
Motor rated power	170kw/1600-2300rpm
Motor rated torque	1100Nm/800-1400rpm

■ Travel

Max. travel speed	80km/h
Min. travel speed	2km/h
Min. turning diameter	14000mm
Min. ground clearance	330mm
Approach angle	19°
Departure angle	12°
Braking distance	10m
Max. grade ability	60%



■ Main performance

Max. total rated lifting capacity	60t
Min. rated working radius	2.1m
Jib offset angle	0°、15°、30°

● Boom length

Base boom length	10.3m
Fully-extended boom length	48m
Maximum length of boom and jib	64m

● Hoist height

Base boom lifting height	10.2m
Fully-extended boom lifting height	48m
Longest boom and jib lifting height	63m

● Hoist torque and outrigger span

Max. load moment of the base boom	1722kN.m
Max. load moment of fully-extended boom	960kN.m
Max. load moment of longest boom and jib	494kN.m
Outrigger span (horizontal and longitudinal)	6.5m*7.65m

■ Working speed

Main winch lifting speed (single line, 4th layer, with no load)	135r/min
Auxiliary winch lifting speed (single line, 4th layer, with no load)	135r/min

● Hoisting speed

Boom lifting time	38s
Boom fully extending time	310s
Maximum slewing speed	1.5r/min

● Outrigger extending and retracting time

Outrigger beams retracting/extending time	20s/25s
Outrigger jacks retracting/extending time	30s/60s



XCMG-approved attachments



Genuine parts



Extension of warranty



Financial solutions



Maintenance contract



Telematics

Professional Integrated Complete Solutions

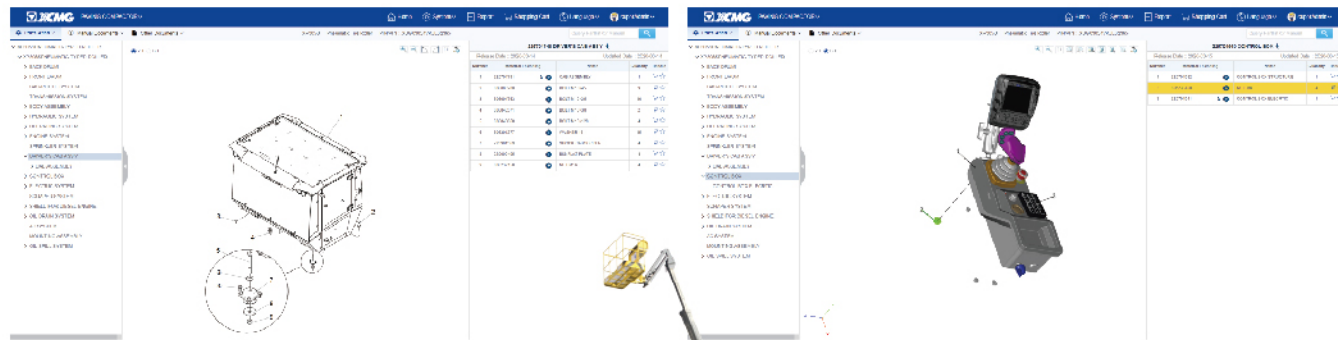
The XCMG group has built a strong reputation based on the quality, reliability, and durability of its construction machinery. What's more, XCMG has gradually established a service network to constantly provide its local integrated and highly efficient complete solutions for all customers.

Full Range of Services Ready for you

In order to respond to your needs as fast as possible, XCMG experts are on their way to your job site from one of our facilities near you. A full range of services is available in order to reduce your total cost of ownership and increase your revenue.



XCMG Global Spare parts System



Mobile cranes



Excavators



Aerial work platforms



Wheel loaders



Road machinery



